



Electronic Filing: Received, Clerk's Office 3/2/2017

Debra D. Ming-Mendoza

County Clerk - Madison County

COUNTY VOTERS
REGISTRATION OFFICER
CLERK OF COUNTY BOARD

157 NORTH MAIN STREET, SUITE 109 • P.O. BOX 218, EDWARDSVILLE, ILLINOIS 62025-0218
PHONE (618) 692-6290 FAX (618) 692-8903

MEMO

DATE: February 16, 2017
TO: Planning and Development
FROM: Debra Ming-Mendoza
County Clerk
RE: Madison County Board Meeting
February 15, 2017

Enclosed please find certified copies of Resolutions which were adopted by the Madison County Board at its meeting on February 15, 2017, as follows:

1. An Ordinance Prohibiting the use of Groundwater as a Potable Water Supply by the Installation or use of Potable Water Supply Wells or by any other Method within the Groundwater Limitation Area.

DDM/vlj
Enclosure

AN ORDINANCE PROHIBITING THE USE OF GROUNDWATER AS A POTABLE WATER SUPPLY BY THE INSTALLATION OR USE OF POTABLE WATER SUPPLY WELLS OR BY ANY OTHER METHOD WITHIN THE "GROUNDWATER LIMITATION AREA" SPECIFIED IN THIS ORDINANCE

WHEREAS, properties with Parcel ID Numbers 13-1-21-36-01-101-006 and 13-2-21-36-01-101-007 in Madison County, Illinois have been used over a period of time for landfill purposes; and,

WHEREAS, because of said use, concentrations of certain chemical constituents in the groundwater beneath the below described Groundwater Limitation Area located in Madison County may exceed Class I groundwater quality standards for potable resource groundwater as set forth in 35 Illinois Administrative Code 620 or Tier 1 remediation objectives as set forth in 35 Illinois Administrative Code 742; and,

WHEREAS, The "Groundwater Limitation Area" includes the parcels of land identified by the parcel numbers in Attachment A and the shaded areas on the map in Attachment B; and,

WHEREAS, Madison County desires to limit potential threats to human health from groundwater contamination while facilitating the redevelopment and productive use of properties that are the source of said chemical constituents;

NOW, THEREFORE, BE IT ORDAINED by the Madison County Board, as follows:

Section 1. Use of groundwater as a potable water supply is prohibited. Except for such uses or methods in existence before the effective date of this ordinance, the use or attempt to use as a potable water supply groundwater from all depths for the properties identified in Attachment A and depicted on Attachment B, copies of which are attached hereto and made a part hereof (hereinafter referred to as the "Groundwater Limitation Area"), by the installation or drilling of wells or by any other method is hereby prohibited. This prohibition expressly includes Madison County.

Section 2. Penalties. Any person violating the provisions of this ordinance shall be subject to a fine of up to \$1000.00 for each violation.

Section 3. Definitions:

"Persons" Any individual, partnership, co-partnership firm, company, limited liability company, corporation, association, joint stock company, trust, estate, political subdivision, or any other legal entity, or their legal representatives, agents or assigns.

"Potable Water" is any water used for human or domestic consumption, including, but not limited to, water used for drinking, bathing, swimming, washing dishes, or preparing foods.

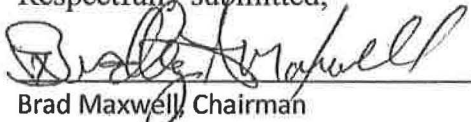
Section 4. INCONSISTENT ORDINANCES REPEALED, All ordinances or parts of ordinances in conflict with this ordinance are hereby repealed insofar as they are in conflict with this ordinance.

Section 5. Severability. If any provision of this ordinance or its application to any person or under any circumstances is adjudged invalid, such adjudication shall not affect the validity of the ordinance as a whole or of any portion not adjudged invalid.

Section 6. Effective date. This Ordinance shall be in full force and effect from and after its passage, approval and publication as required by law.

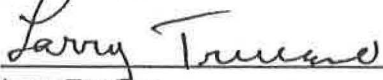
PASSED AND ADOPTED by the County Board of the County of Madison, Illinois on this ____ day of February, 2017.

Respectfully submitted,




Brad Maxwell, Chairman

Nick Petrillo



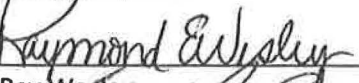
Larry Trucano



David Michael




Philip Chapman



Ray Wesley



Mick Madison



Robert Pollard

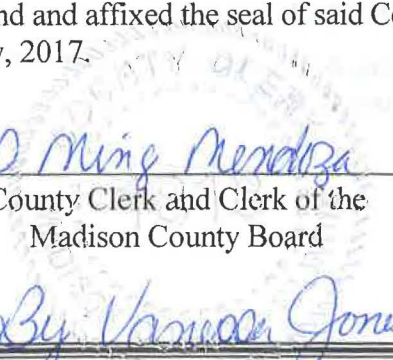
Planning & Development Committee
February 2, 2017



STATE OF ILLINOIS)
 SS
COUNTY OF MADISON)

I, Debra D. Ming-Mendoza, County Clerk in and for said County, in the State aforesaid, and keeper of the records and files thereof, as provided by statute, do hereby certify the foregoing to be a true, perfect and complete copy of a resolution adopted by the County Board of Madison County, at its regular meeting held at Edwardsville, on February 15, 2017.

IN TESTIMONY WHEREOF, I have hereunto set my hand and affixed the seal of said County at my office in Edwardsville, in said County, this 16th day of February, 2017.

A faint circular seal of Madison County, Illinois, is visible in the background behind the signature and title.
Debra D. Ming-Mendoza
County Clerk and Clerk of the
Madison County Board

By: Vanessa Jones, dep

Attachment A

PIN	HOUSENO	STREET	CITY	STATE	ZIPCODE
13-1-21-25-00-000-010	6803	Clay School Rd	Collinsville	IL	62234
13-1-21-25-00-000-021.002	6827	Clay School Rd	Collinsville	IL	62234
13-1-21-25-00-000-021.003	6851	Clay School Rd	Collinsville	IL	62234
13-1-21-25-00-000-011	6760	Clay School Rd	Collinsville	IL	62234
13-1-21-25-00-000-021.005	6838	Clay School Rd	Collinsville	IL	62234
13-1-21-25-00-000-021.013	505	Ace Rd	Collinsville	IL	62234
13-1-21-25-00-000-021.011	6852	Clay School Rd	Collinsville	IL	62234
13-1-21-25-00-000-021.010	500	Ace Rd	Collinsville	IL	62234
13-2-21-26-04-401-012	6708	Clay School Rd	Collinsville	IL	62234
13-1-21-25-00-000-026	7151	Lockmann Rd	Collinsville	IL	62234
13-2-21-26-04-401-016	6706	Clay School Rd	Collinsville	IL	62234
13-2-21-26-04-401-020	463	Lumaghi Hts	Collinsville	IL	62234
13-1-21-25-00-000-019	425	Arnotti Ln	Collinsville	IL	62234
13-1-21-25-00-000-020.004	1161	Darbie Ln	Collinsville	IL	62234
13-1-21-25-00-000-025.002	7067	Lockmann Rd	Collinsville	IL	62234
13-1-21-25-00-000-025	7145	Lockmann Rd	Collinsville	IL	62234
13-1-21-25-00-000-020.002	410	Arnotti Ln	Collinsville	IL	62234
13-2-21-25-00-000-029	1115	Darbie Ln	Collinsville	IL	62234
13-1-21-25-00-000-024.001	7031	Lockmann Rd	Collinsville	IL	62234
13-1-21-25-00-000-018	407	Arnotti Ln	Collinsville	IL	62234
13-1-21-25-00-000-017.001	401	Arnotti Ln	Collinsville	IL	62234
13-2-21-26-04-401-029	414	Lumaghi Hts	Collinsville	IL	62234
13-2-21-26-04-401-030	408	Lumaghi Hts	Collinsville	IL	62234
13-2-21-26-04-401-027	403	Lumaghi Hts	Collinsville	IL	62234
13-1-21-25-00-000-024.002	7050	Lockmann Rd	Collinsville	IL	62234
13-2-21-26-04-401-032	354	Lumaghi Hts	Collinsville	IL	62234
13-1-21-25-00-000-024.003	7010	Lockmann Rd	Collinsville	IL	62234
13-2-21-35-02-201-003	342	Lumaghi Hts	Collinsville	IL	62234
13-1-21-36-01-101-010	7003	Lockmann Rd	Collinsville	IL	62234
13-1-21-36-01-101-011	7001	Lockmann Rd	Collinsville	IL	62234
13-2-21-35-02-201-002	343	Lumaghi Hts	Collinsville	IL	62234
13-1-21-36-00-000-016.002	7157	Lebanon Rd	Collinsville	IL	62234
13-2-21-36-01-101-008	6874	Lebanon Rd	Collinsville	IL	62234
13-2-21-35-02-201-002.001	333	Lumaghi Hts	Collinsville	IL	62234
13-2-21-35-02-201-004	324	Lumaghi Hts	Collinsville	IL	62234
13-1-21-36-01-101-013	6964	Lebanon Rd	Collinsville	IL	62234
13-1-21-36-01-101-013.001	7006	Lebanon Rd	Collinsville	IL	62234
13-2-21-36-02-201-004	7033	Lebanon Rd	Collinsville	IL	62234

Electronic Filing: Received, Clerk's Office 3/2/2017

13-2-21-36-02-201-007	7049	Lebanon Rd	Collinsville	IL	62234
13-2-21-35-02-201-008	307	Lumaghi Hts	Collinsville	IL	62234
13-2-21-35-02-201-006	306	Lumaghi Hts	Collinsville	IL	62234
13-2-21-36-01-101-002	6755	Stuart Dr	Collinsville	IL	62234
13-1-21-36-02-201-009	7115	Lebanon Rd	Collinsville	IL	62234
13-2-21-35-02-201-007	300	Lumaghi Hts	Collinsville	IL	62234
13-2-21-35-02-201-009.001	6700	Stuart Dr	Collinsville	IL	62234
13-1-21-35-00-000-006.002	301	Rolek Rd	Collinsville	IL	62234
13-2-21-35-02-201-010	6712	Stuart Dr	Collinsville	IL	62234
13-2-21-35-02-201-013	6730	Stuart Dr	Collinsville	IL	62234
13-1-21-36-00-000-014	7060	Lebanon Rd	Collinsville	IL	62234
13-2-21-35-02-201-018	6740	Stuart Dr	Collinsville	IL	62234
13-1-21-36-00-000-011	7030	Lebanon Rd	Collinsville	IL	62234
13-2-21-36-01-102-003	12	Oakhill Dr	Collinsville	IL	62234
13-2-21-36-01-102-002	10	Oakhill Dr	Collinsville	IL	62234
13-2-21-36-01-102-004	7	Oakhill Dr	Collinsville	IL	62234
13-2-21-36-01-102-001	8	Oakhill Dr	Collinsville	IL	62234
13-2-21-36-01-102-005	5	Oakhill Dr	Collinsville	IL	62234
13-1-21-36-00-000-005.007	24	Lindenwood Dr	Collinsville	IL	62234
13-2-21-36-13-301-014	6	Oakhill Dr	Collinsville	IL	62234
13-2-21-36-13-301-008	9	Huntleigh Dr	Collinsville	IL	62234
13-1-21-36-00-000-005.004	15	Lindenwood Dr	Collinsville	IL	62234
13-1-21-36-00-000-005.009	17	Lindenwood Dr	Collinsville	IL	62234
13-1-21-36-00-000-005.003	22	Lindenwood Dr	Collinsville	IL	62234
13-2-21-36-13-301-015	4	Oakhill Dr	Collinsville	IL	62234
13-2-21-36-13-301-011	1	Oakhill Dr	Collinsville	IL	62234
13-2-21-36-13-301-007	7	Huntleigh Dr	Collinsville	IL	62234
13-2-21-36-13-301-016	4	Huntleigh Dr	Collinsville	IL	62234
13-2-21-36-13-301-018	13	Lindenwood Dr	Collinsville	IL	62234
13-1-21-36-00-000-005.006	18	Lindenwood Dr	Collinsville	IL	62234
13-2-21-36-13-301-017	11	Lindenwood Dr	Collinsville	IL	62234
13-2-21-36-13-301-001	528	S Mulberry Rd	Collinsville	IL	62234
13-1-21-36-00-000-005.005	16	Lindenwood Dr	Collinsville	IL	62234
13-2-21-36-13-301-006	5	Huntleigh Dr	Collinsville	IL	62234
13-2-21-36-13-301-005	3	Huntleigh Dr	Collinsville	IL	62234
13-2-21-36-14-301-001	14	Lindenwood Dr	Collinsville	IL	62234
13-2-21-36-13-301-004	1	Huntleigh Dr	Collinsville	IL	62234
13-2-21-36-14-301-002	2	Hillsborough Dr	Collinsville	IL	62234
13-2-21-36-13-301-019	12	Lindenwood Dr	Collinsville	IL	62234
13-2-21-36-13-301-003	7	Lindenwood Dr	Collinsville	IL	62234
13-2-21-36-13-301-020	10	Lindenwood Dr	Collinsville	IL	62234

Electronic Filing: Received, Clerk's Office 3/2/2017

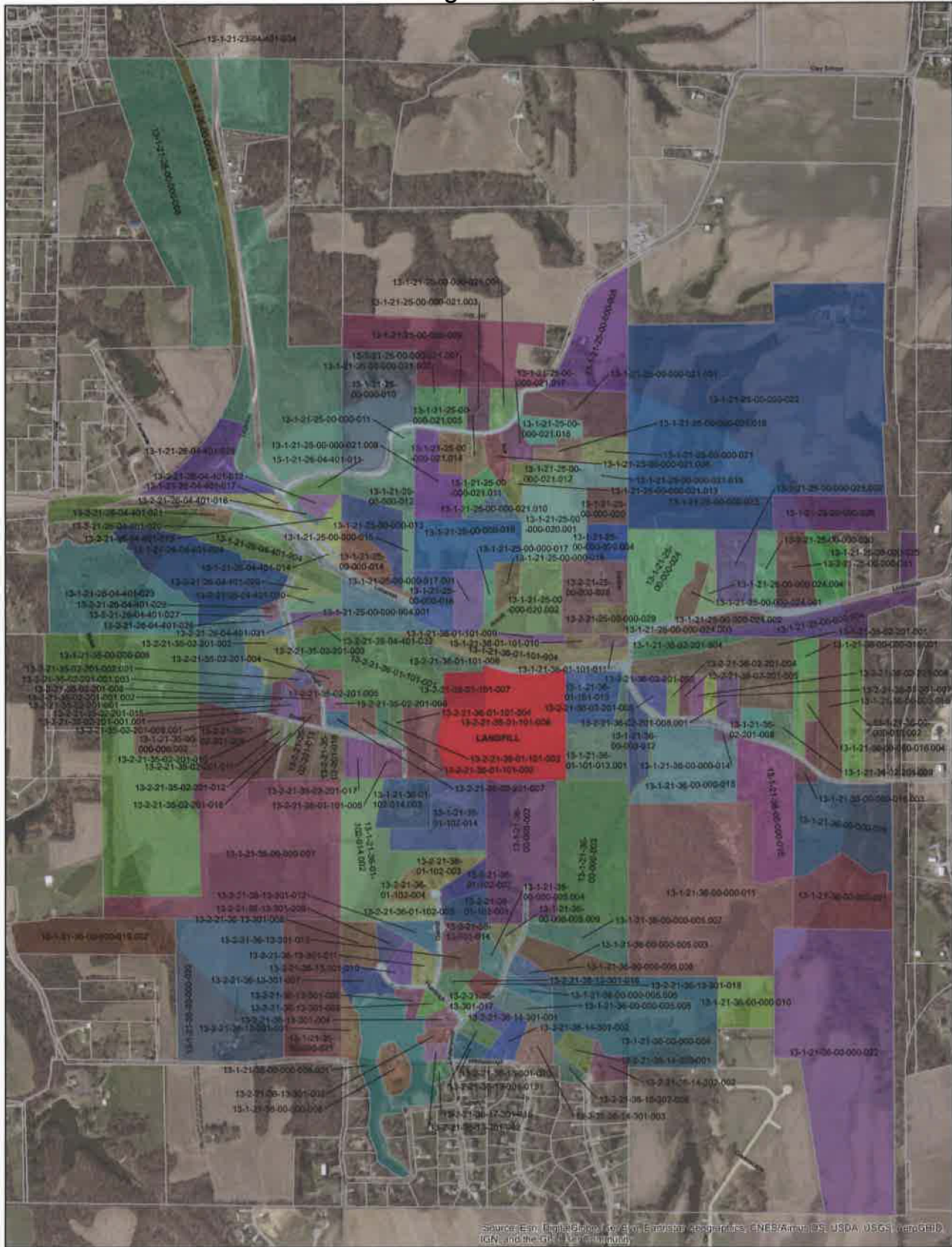
13-1-21-36-00-000-006	16	Oakleigh Dr	Collinsville	IL	62234
13-2-21-36-18-302-008	15	Woodford Way	Collinsville	IL	62234
13-1-21-25-00-000-021.015	516	Ace Rd	Collinsville	IL	62234
13-1-21-36-00-000-004	1990	Orr Ln	OFallon	IL	62269
13-2-21-36-14-302-001	11	Woodford Way	Collinsville	IL	62234
13-2-21-36-14-302-002	16	Woodford Way	Collinsville	IL	62234
13-1-21-35-00-000-006	300	Rolek Rd	Collinsville	IL	62234
13-1-21-35-00-000-021	522	S Mulberry Rd	Collinsville	IL	62234
13-2-21-35-02-201-015	6711	Stuart Dr	Collinsville	IL	62234
13-2-21-35-02-201-016	6721	Stuart Dr	Collinsville	IL	62234
13-1-21-36-02-201-001	6997	Lebanon Rd	Collinsville	IL	62234
13-1-21-25-00-000-021.007	6839	Clay School Rd	Collinsville	IL	62234
13-1-21-26-04-401-024	415	Lumaghi Hts	Collinsville	IL	62234
13-2-21-26-04-401-026	355	Lumaghi Hts	Collinsville	IL	62234
13-2-21-26-04-401-028	409	Lumaghi Hts	Collinsville	IL	62234
13-2-21-26-04-401-031	402	Lumaghi Hts	Collinsville	IL	62234
13-2-21-36-01-101-001	312	Lumaghi Hts	Collinsville	IL	62234
13-2-21-36-02-201-003	7019	Lebanon Rd	Collinsville	IL	62234
13-2-21-36-13-301-012	3	Oakhill Dr	Collinsville	IL	62234
13-2-21-36-13-301-010	8	Huntleigh Dr	Collinsville	IL	62234
13-1-21-36-00-000-005.008	20	Lindenwood Dr	Collinsville	IL	62234
13-2-21-36-14-301-003	4	Hillsborough Dr	Collinsville	IL	62234
13-2-21-36-13-301-002	5	Lindenwood Dr	Collinsville	IL	62234
13-2-21-36-17-301-015	3	Lindenwood Dr	Collinsville	IL	62234
13-1-21-25-00-000-904	7179	Lockmann Rd	Collinsville	IL	62234
13-1-21-25-00-000-024	7023	Lockmann Rd	Collinsville	IL	62234
13-1-21-26-00-000-008	509	Logsdon Ln	Collinsville	IL	62234
13-1-21-36-00-000-016	7133	Lebanon Rd	Collinsville	IL	62234
13-1-21-25-00-000-021.012	509	Ace Rd	Collinsville	IL	62234
13-1-21-35-00-000-020	490	S Mulberry Rd	Collinsville	IL	62234
13-2-21-36-01-101-005	6778	Stuart Dr	Collinsville	IL	62234
13-1-21-36-00-000-002	19	Lindenwood Dr	Collinsville	IL	62234
13-1-21-36-01-102-014	6790	Stuart Dr	Collinsville	IL	62234
13-1-21-23-04-401-904	0				
13-1-21-26-00-000-904	0				
13-1-21-25-00-000-020.001	0				
13-1-21-25-00-000-020	0				
13-2-21-26-04-401-021	0				
13-1-21-26-04-401-023	0				
13-1-21-25-00-000-017	0				
13-1-21-36-01-101-009	0				

Electronic Filing: Received, Clerk's Office 3/2/2017

13-1-21-36-02-201-904	0				
13-2-21-36-01-101-007	0				
13-2-21-36-02-201-005	0				
13-2-21-36-02-201-006	0				
13-1-21-36-00-000-012	0				
13-2-21-35-02-201-005	0				
13-2-21-36-01-101-003	0				
13-2-21-36-01-101-004	0				
13-1-21-36-00-000-003	0				
13-1-21-36-00-000-013	0				
13-1-21-36-00-000-021	0				
13-1-21-36-00-000-022	0				
13-1-21-36-00-000-010	0				
13-1-21-36-00-000-005.001	0				
13-1-21-35-00-000-007	0				
13-2-21-35-02-201-001.002	0				
13-1-21-36-02-201-008	0				
13-1-21-25-00-000-009	0				
13-1-21-25-00-000-023	0				
13-1-21-25-00-000-024.004	0				
13-1-21-25-00-000-904.001	0				
13-1-21-36-01-101-904	0				
13-1-21-36-00-000-016.001	0				
13-2-21-36-02-201-002	0				
13-1-21-36-00-000-016.004	0				
13-2-21-36-13-301-009	0				
13-1-21-26-04-401-014	0				
13-1-21-36-00-000-016.003	0				
13-1-21-35-00-000-019.002	0				
13-1-21-36-01-102-014.002	0				
13-1-21-36-01-102-014.003	0				
13-1-21-25-00-000-021.014	6832	Clay School Rd	Collinsville	IL	62234
13-1-21-36-00-000-020	7156	Lebanon Rd	Collinsville	IL	62234
13-1-21-36-00-000-015	7084	Lebanon Rd	Collinsville	IL	62234
13-2-21-35-02-201-011	6718	Stuart Dr	Collinsville	IL	62234
13-1-21-26-04-401-025	500	Logsdon Ln	Collinsville	IL	62234
13-1-21-25-00-000-008	6934	Clay School Rd	Collinsville	IL	62234
13-1-21-25-00-000-022	555	Longhi Rd	Collinsville	IL	62234
13-1-21-25-00-000-013	6793	Lebanon Rd	Collinsville	IL	62234
13-1-21-25-00-000-014	6759	Lebanon Rd	Collinsville	IL	62234
13-1-21-25-00-000-015	6805	Lebanon Rd	Collinsville	IL	62234

Electronic Filing: Received, Clerk's Office 3/2/2017

13-1-21-25-00-000-016	6809	Lebanon Rd	Collinsville	IL	62234
13-1-21-25-00-000-012	6766	Clay School Rd	Collinsville	IL	62234
13-1-21-25-00-000-021.008	6826	Clay School Rd	Collinsville	IL	62234
13-1-21-26-04-401-011	6712	Clay School Rd	Collinsville	IL	62234
13-1-21-25-00-000-021.006	6850	Clay School Rd	Collinsville	IL	62234
13-1-21-25-00-000-021.001	6868	Clay School Rd	Collinsville	IL	62234
13-1-21-25-00-000-021.004	6857	Clay School Rd	Collinsville	IL	62234
13-2-21-35-02-201-009	6706	Stuart Dr	Collinsville	IL	62234
13-2-21-35-02-201-001.003	6695	Stuart Dr	Collinsville	IL	62234
13-2-21-35-02-201-012	6724	Stuart Dr	Collinsville	IL	62234
13-2-21-35-02-201-001	6701	Stuart Dr	Collinsville	IL	62234
13-2-21-25-00-000-028	1127	Darbie Ln	Collinsville	IL	62234
13-2-21-25-00-000-031	7121	Lockmann Rd	Collinsville	IL	62234
13-1-21-25-00-000-021.017	518	Ace Rd	Collinsville	IL	62234
13-1-21-25-00-000-021	0				
13-1-21-26-04-401-017	0				
13-2-21-36-02-201-008.001	0				
13-2-21-26-04-401-013	0				
13-1-21-26-04-401-904	0				
13-1-21-36-01-101-006	0				
13-2-21-35-02-201-001.001	0				
13-2-21-35-02-201-017	0				
13-2-21-25-00-000-030	0				
13-1-21-25-00-000-021.018	0				
13-1-21-25-00-000-021.016	0				



Source: Esri, DigitalGlobe, GeoEye, Earthstar (Advanced), CNES/Airbus DS, USDA, USGS, AeroGRID, IGN, and the GIS User Community

Legend

- Groundwater Limitation Area (Multi Colored by Parcel)
- Closed Collinsville Landfill
- Parcel Boundaries

Attachment B

Groundwater Limitation Area
Closed Collinsville Landfill

Madison County
Illinois



Date: 2/2/2017
Source: Madison Co. IL GIS Office